

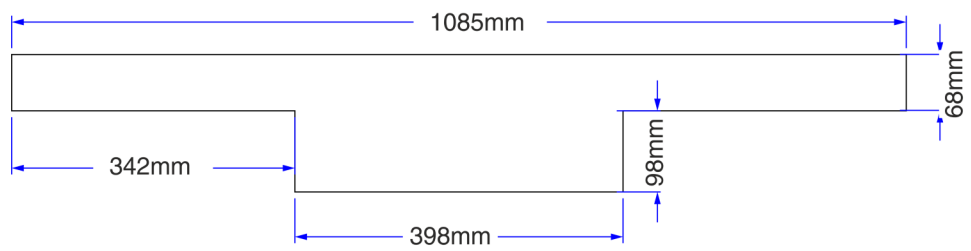
LCC Modelling System

B 00-07A Bundle: Station platform with building extension

Bundle contains:

- 5x LCC 00-02
- 4x LCC 00-41
- 2x LCC 00-42A
- 2x LCC 00-42B
- 8x LCC 00-43
- 4x LCC 00-43A
- 1x LCC 00-44
- 10x LCC 00-45
- 6x LCC 00-46
- 5x LCC 00-46L
- 8x LCC 00-46B
- 9x LCC 00-47

Size diagram:



Platform height: 15mm

All drawings are not in scale.

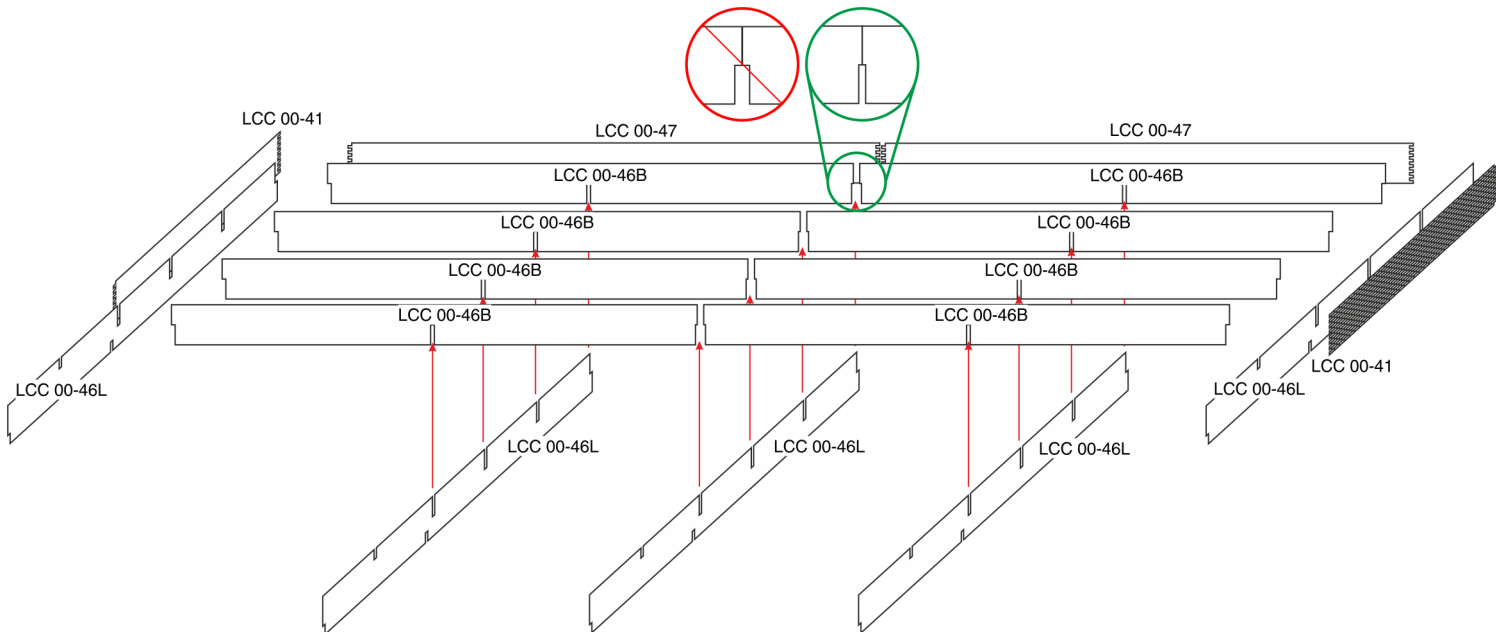
LCC Modelling System is flexible and you can make easy modification. Please visit our website at www.lcut.co.uk to shop for additional LCC elements.

We recommend PVA or any other paper/wood glue for the fibre board parts.

Painting recommendation:

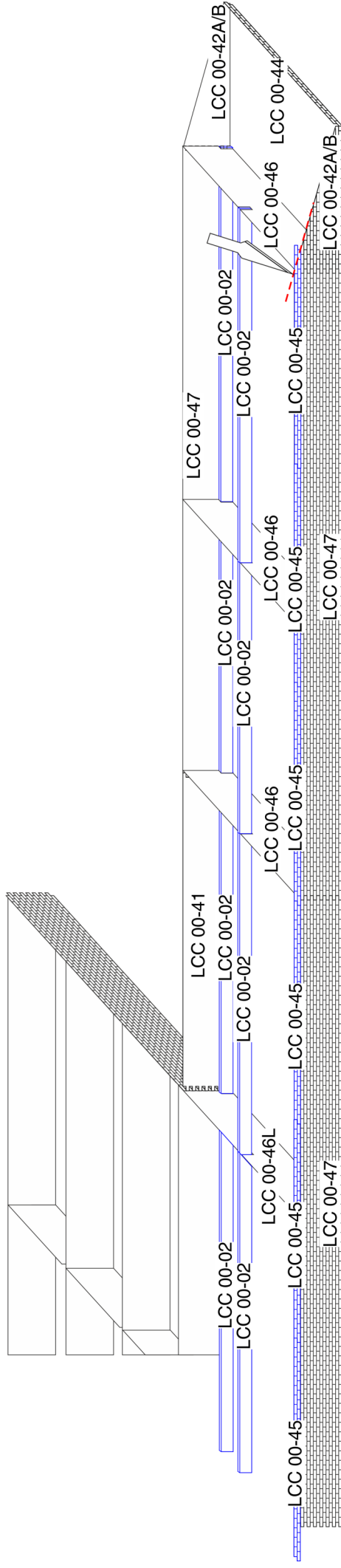
We recommend using acrylic paints. There is no need to undercoat the surface but it can be done if desired. The material used is porous and relatively forgiving, heavy coats are unlikely to flood the brickwork.

EXTENSION INTERNAL SUPPORT LATTICE



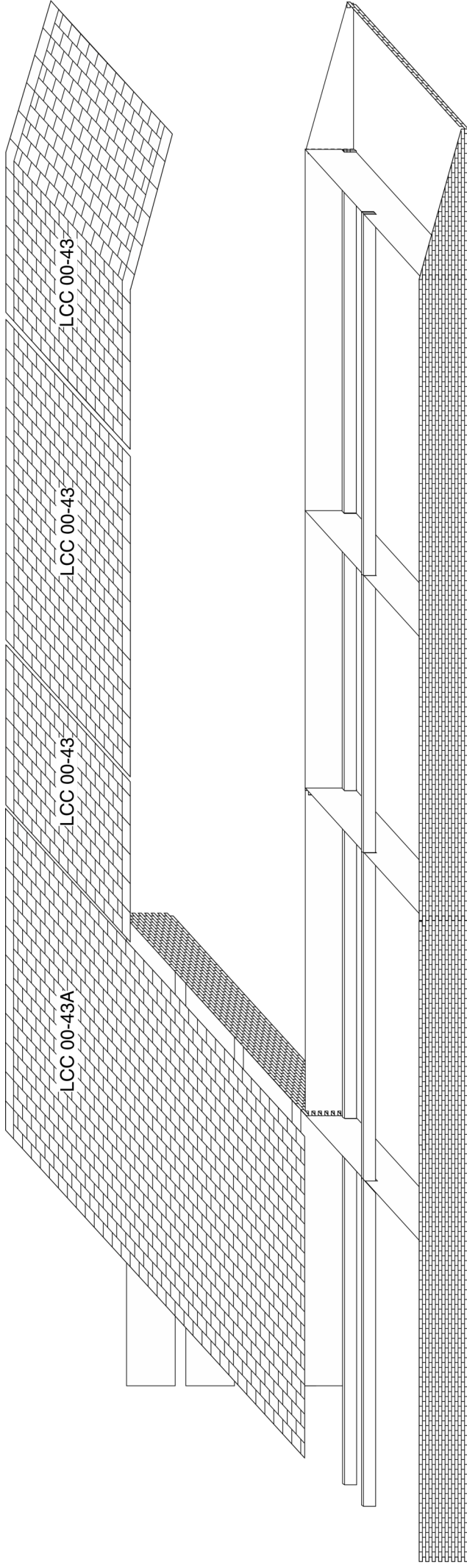
First step is to assemble the extension latticework. Start by gluing LCC 00-41 and LCC 00-47 together at a right angle. Ensure a right and left mirror image assemblies are created. Next with the pair of side walls glue LCC 00-46L to the back of LCC 00-41 and LCC 00-46B to the back of LCC 00-47. Ensure that LCC 00-46B are glued correctly and the longer notch is glued towards LCC 00-41. LCC 00-46L and LCC 00-46B should interlock at the inner corner of LCC 00-41 and LCC 00-47. Continue with the latticework by interlocking LCC 00-46B into LCC 00-46L. Due to manufacturing limitations there is a chance some long elements will be slightly longer or shorter. This will not affect the finished model in a significant way. At this stage there is no need to worry about correct angles of the joined elements as it will all be corrected and straightened out with pavement.

THE PLATFORM



After the extension is completed, start building the rest of the platform. We recommend to start with gluing up the side wall sections first. Start with LCC 00-41 and LCC 00-47 for the far side, then glue either LCC 00-42A or B depending on which side is being worked on. Glue that assembly to the middle extension section. Then complete the other far side wall. It is important to note that LCC 00-45 are only to be glued to the track side and the platform parts coming from the extension, not the extension itself. Next step is to glue the track side wall. Use remaining LCC 00-47 and platform ends to glue up the wall. As shown on the diagram LCC 00-45 has to be trimmed at the place where it meets with LCC 00-46 or B. When all the sections are completed start joining the two sides of the platform by working from one end to the other. Glue in LCC 00-46 and let it dry, then glue in the LCC 00-02 support strips. The extension section supports (LCC 00-46L) will act like 00-46. Alignment is not critical at this moment as the platform can be shaped slightly later to straighten it out. Finally finish both ends with LCC 00-44.

THE PAVEMENT



Last step in the assembly is to glue pavement to the platforms. We recommend to start with the four LCC 00-43A elements for the extension. At this stage the pavement panels can be used to straighten the platform. Glue the LCC 00-43 starting from the far side and work your way towards the track side, we recommend to not glue the panels to the end of the supports and the track side wall just yet if the platform was not assembled absolutely square. When all four LCC 00-43A panels are glued in place move onto LCC 00-43, again if the platform needs adjusting glue them only to the far side of the platform. End pieces can be handled in two ways, either a full LCC 00-43 can be bent in half or sliced in half to create the slope. When all of the pavement panels have been glued to the far side start the final step of gluing the pavement panels to the track side wall.